

# NEP-2020

## LEARNER CENTRED PEDAGOGY



### Learning Environments

NEP-2020 recommends a shift from teacher-centered to learner-centered pedagogy. Creating a positive learning environment is crucial for effective teaching.

1

#### Engaging and supportive

To encourage academic, social and emotional learning.



#### Provide stimulating experience

To explore new ways of learning, investigating, and experimenting with the topic being taught.

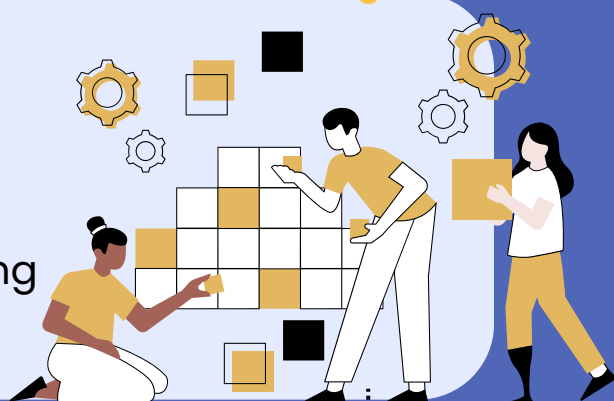


2

3

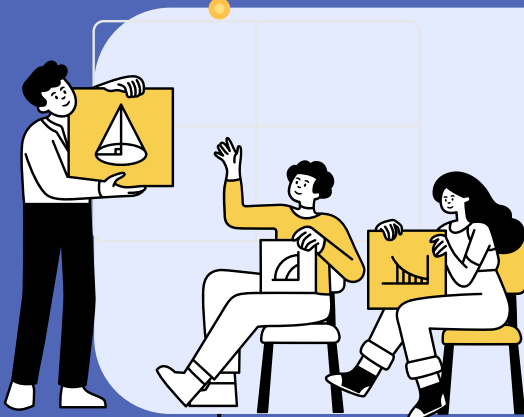
#### Learner-centred

To ensure discovery-oriented, inquiry-driven and flexible learning



#### Encourage learner interactions

To promote discussions, collaborations and co-creation among learners.



4

5

#### Holistic Education

To enable all students to succeed and make learning an enjoyable process.

